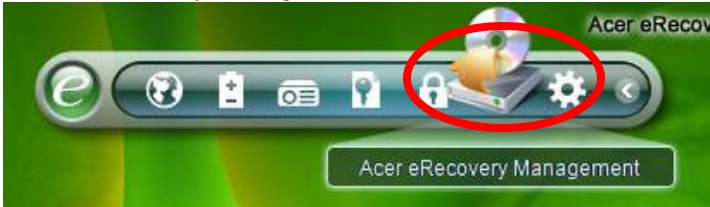


## The procedure to make a Backup disc and Recovery by using Acer eRecovery

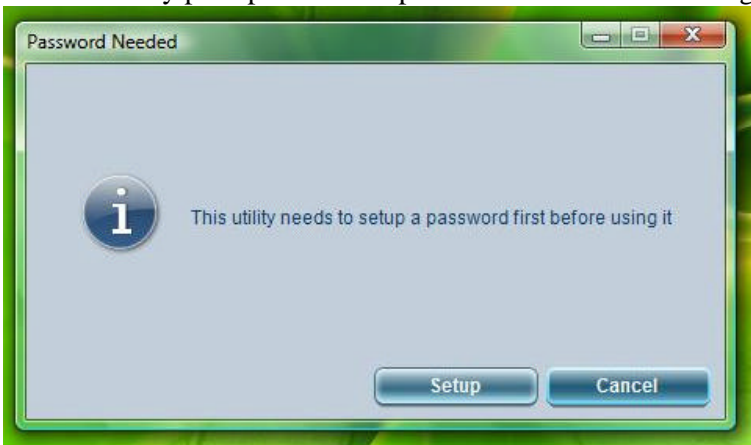
1. Open the Acer Empowering Technology.



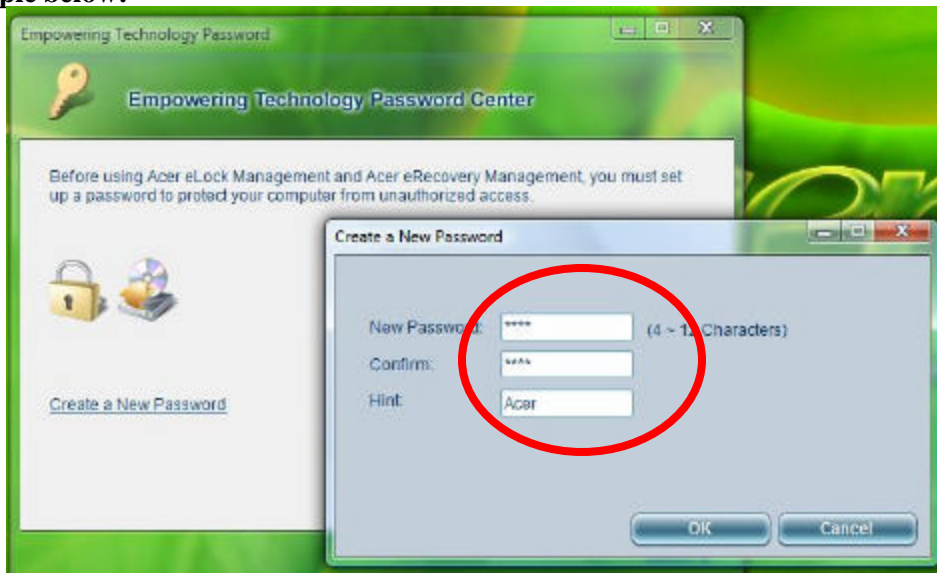
2. Select eRecovery management.



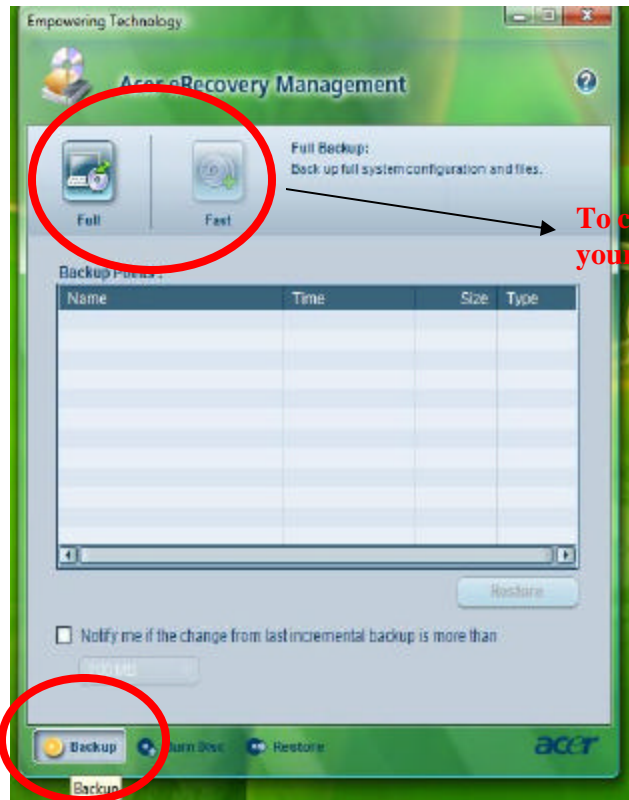
3. Customer may prompt to Set the password if customer is using for the first time.



Example below:

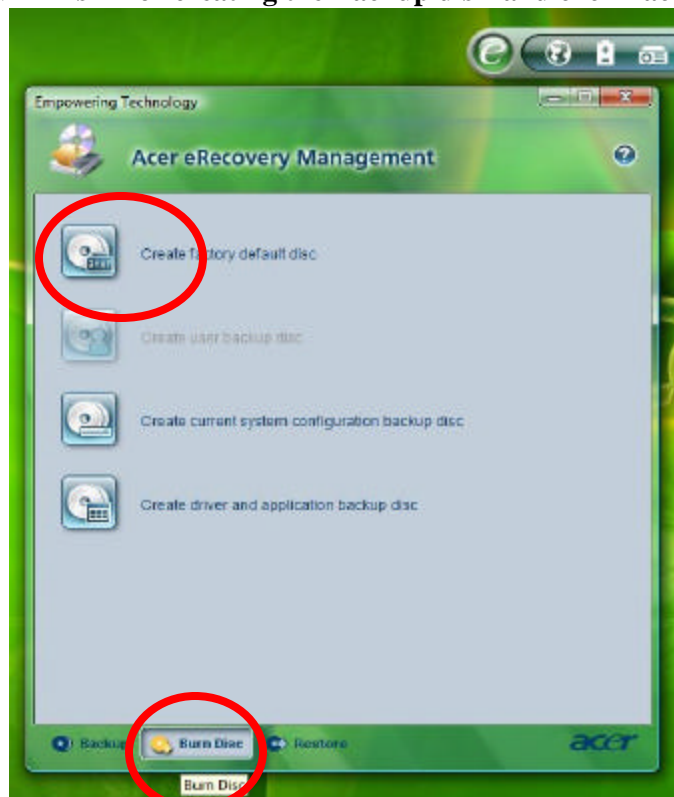


4. Select the Option **“Backup” for customized backup of your system.** The File will be saved on machine in hidden format, which can be used only with recovery **“Restore”** option.



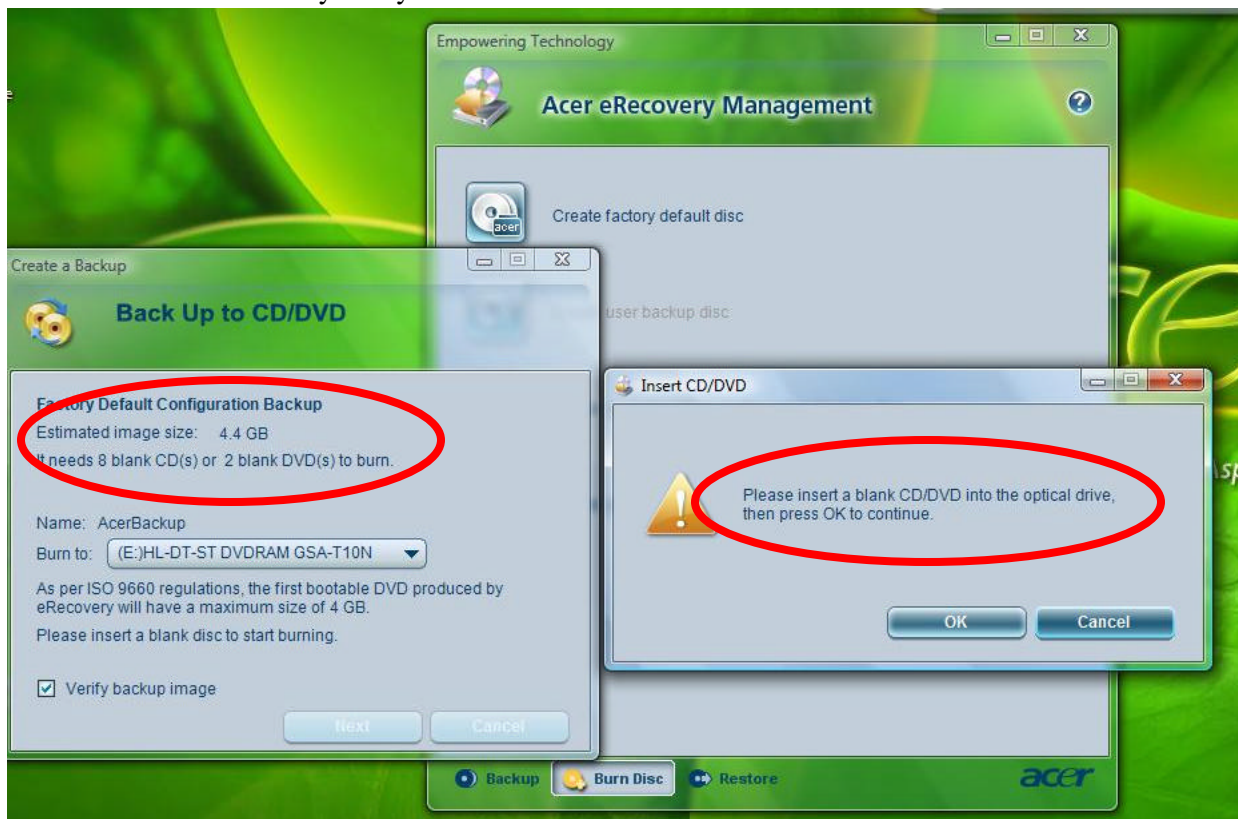
To create the Customized snapshot of your current configuration

5. Select "Burn Disk" for creating the Backup disk and click Factory default disc..



6. It will prompt you to provide 8 Blank Cd's or 2 blank DVD's to create the Backup Recovery Cd. For your computer. The system will prompt you to insert next CD. Do not forget to label the CD with

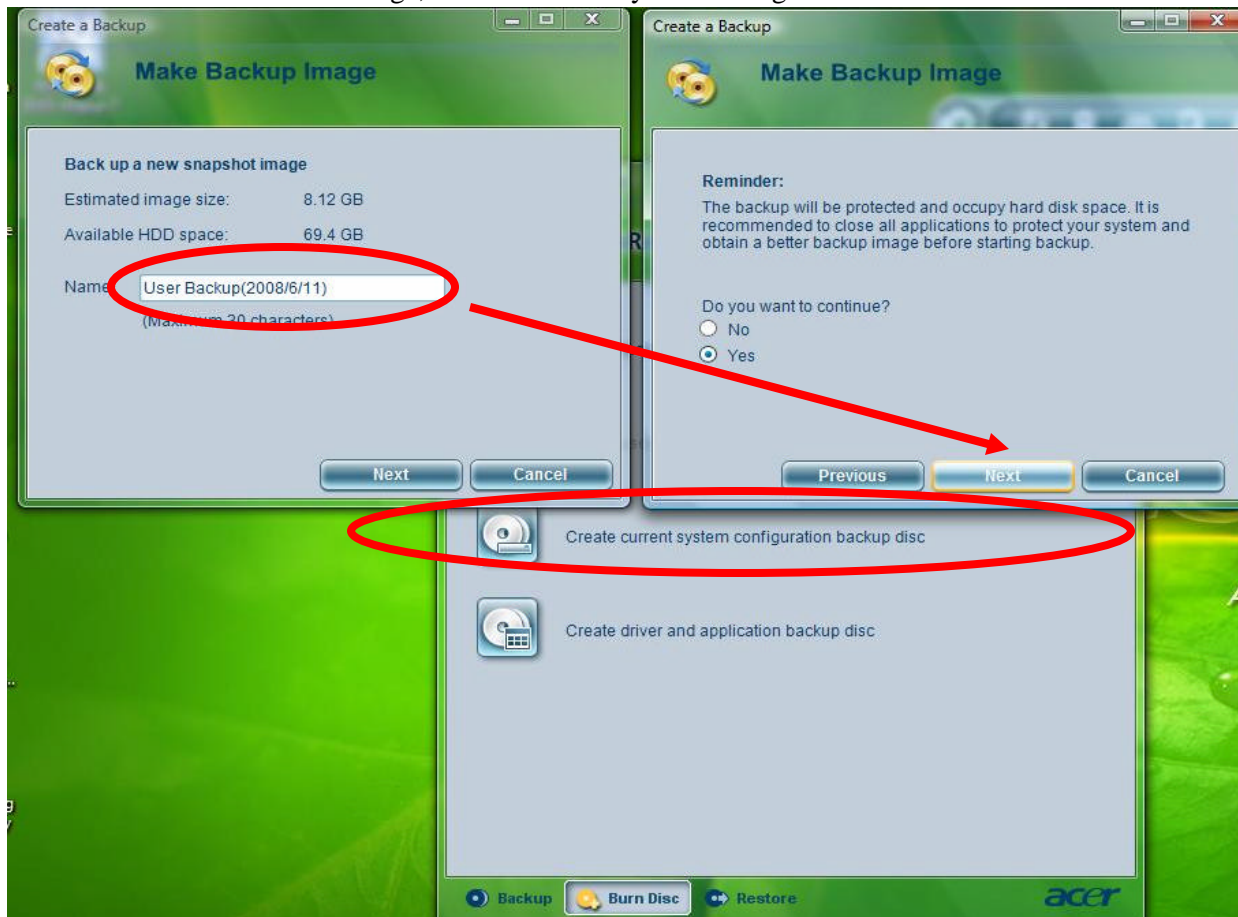
numbers as instructed by the system



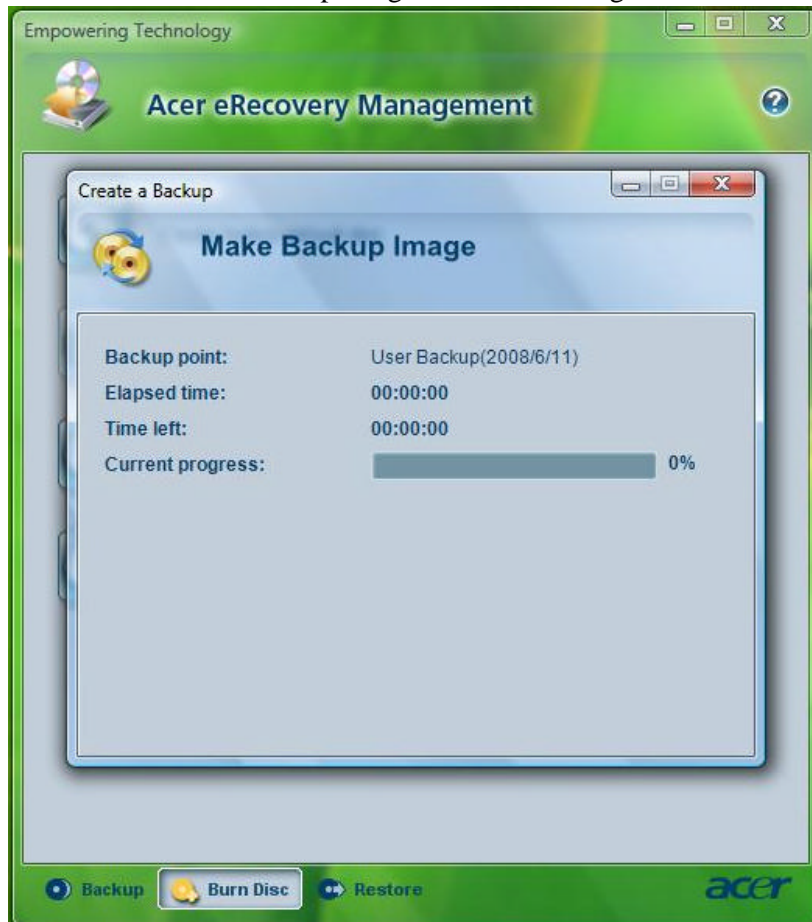
This will create the ‘**Recovery Cd**’ for your computer to restore it back to Factory Default image. Backup disc is ready to use now.

This will be a bootable disc and can be used as normal recovery discs.

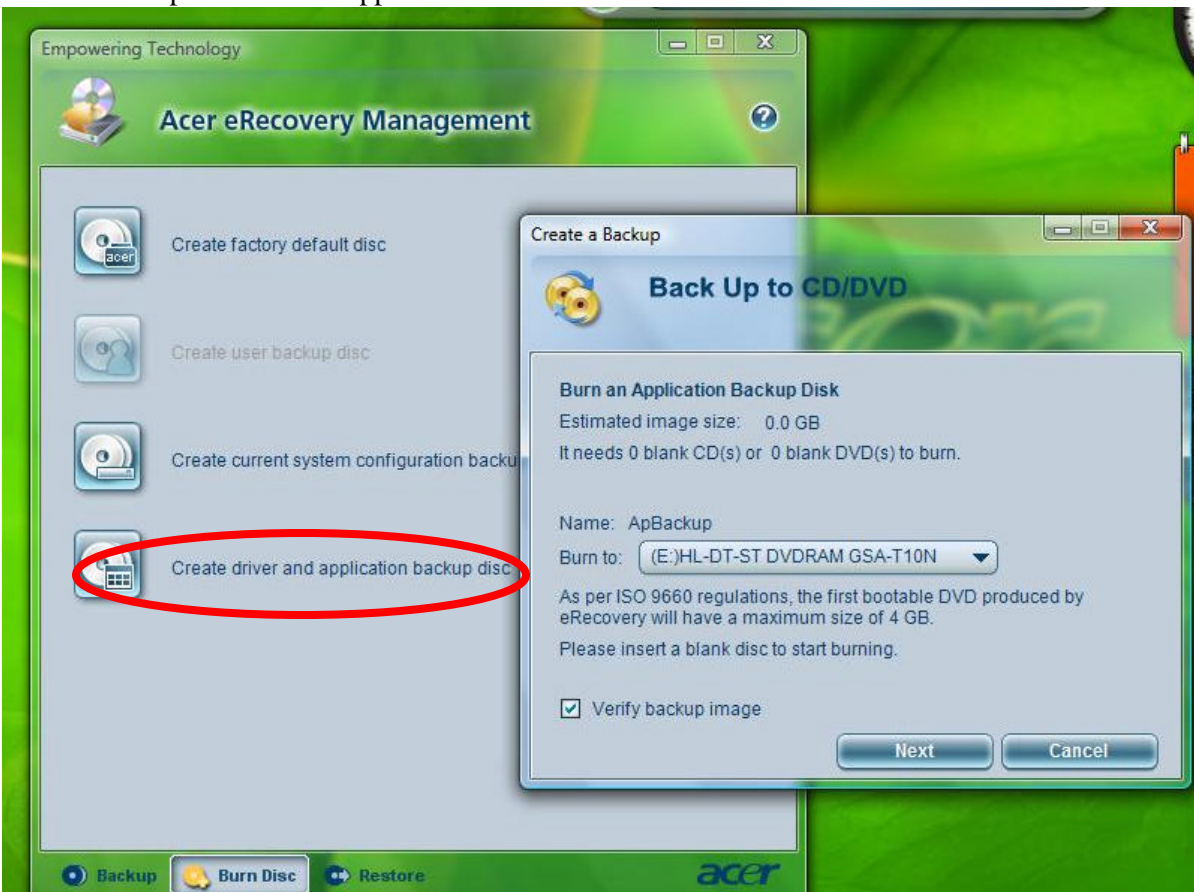
7. To create the Customized image, select “current system configuration”.



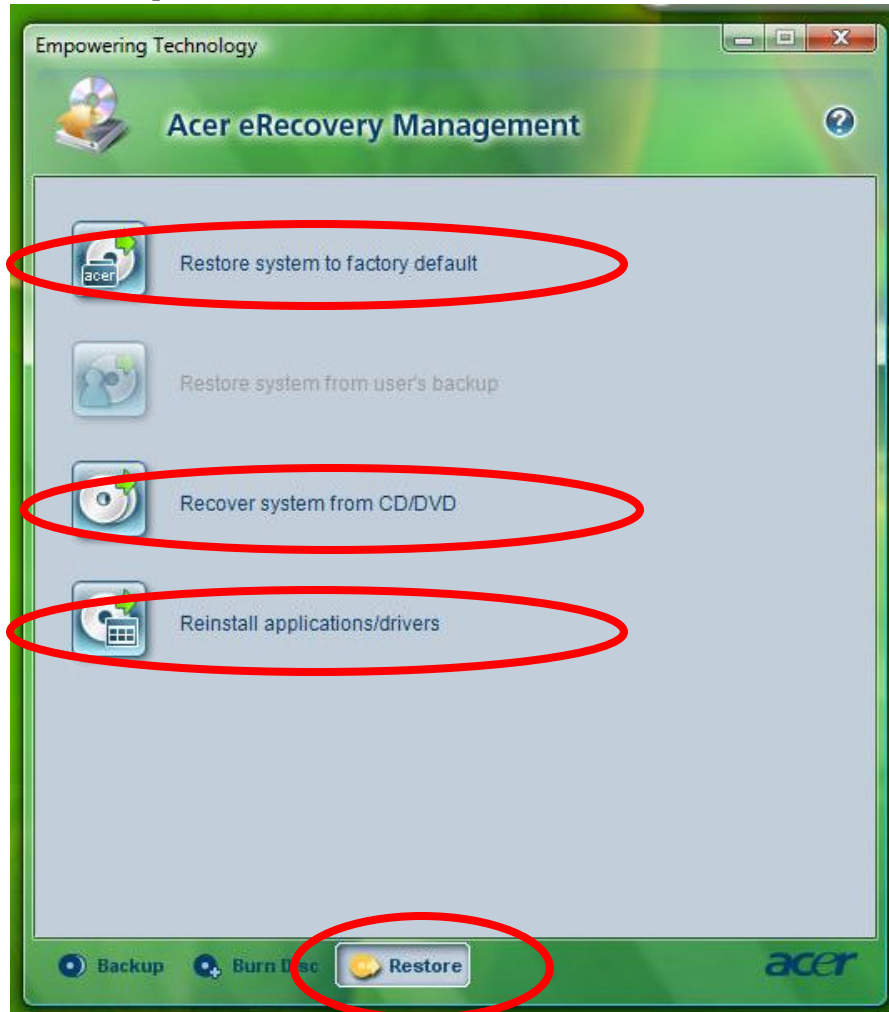
You can give the name to the file and the backup image of current configuration will be saved on local machine.



8. Select the option "create "application Cd" to make the the Cd for future use.



9. To restore back the machine from CD, Factory image or from the customized image on the HDD, select “Restore” option



And Provide the CD's (if applicable).

**Please feel free to contact us on our toll free number 8004711 in the event that any clarification is required.**

### **Helpdesk - Customer Service Division**

**Acer Computer M.E Ltd.**

Jebel Ali Dubai.

email: [ame\\_helpdesk@acer-euro.com](mailto:ame_helpdesk@acer-euro.com)

Web: <http://www.acer.ae>